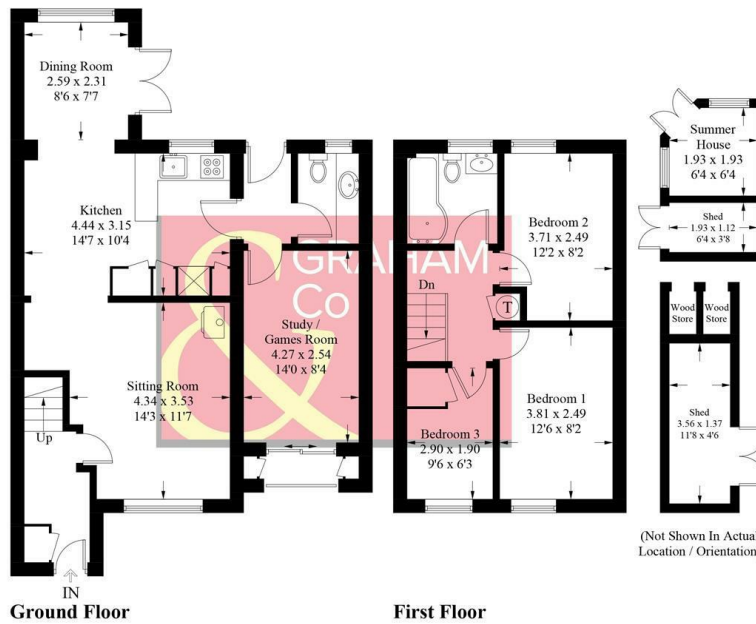


22 Danehurst Place, Andover, SP10 3NL
£1,600 Per Month

PROPERTY DESCRIPTION BY *Miss Kira Langley*

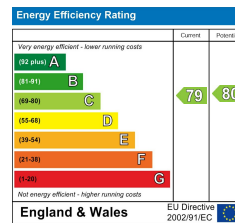
Danehurst Place, SP10

Approximate Gross Internal Area = 97.3 sq m / 1047 sq ft
 Outbuilding = 12.0 sq m / 129 sq ft
 Total = 109.3 sq m / 1176 sq ft



PRODUCED FOR GRAHAM AND CO
 Whilst every attempt has been made to ensure the accuracy of the floorplan, measurements of doors, windows and rooms are approximate. These plans are for representation purposes only as defined by RICS Code of Measuring Practice and used as such by any prospective purchaser. © Emzo Marketing (ID1200740)

DIRECTIONS



Tax Band: D



OPEN 7 DAYS

If you are considering selling your home please contact us today for your free no obligation valuation
01264 356500

IMPORTANT: we would like to inform prospective purchasers that these sales particulars have been prepared as a general guide only. A detailed survey has not been carried out, nor the services, appliances and fittings tested. Room sizes should not be relied upon for furnishing purposes and are approximate. If floor plans are included, they are for guidance only and illustration purposes only and may not be to scale. If there are any important matters likely to affect your decision to buy, please contact us before viewing the property.

