



184 Bury Hill Close, Andover, SP11 7NB
£1,500 PCM

PROPERTY DESCRIPTION BY *Kevin Flain*

Graham & Co are pleased to offer this four bedroom family home which is situated in the popular village of Anna Valley.

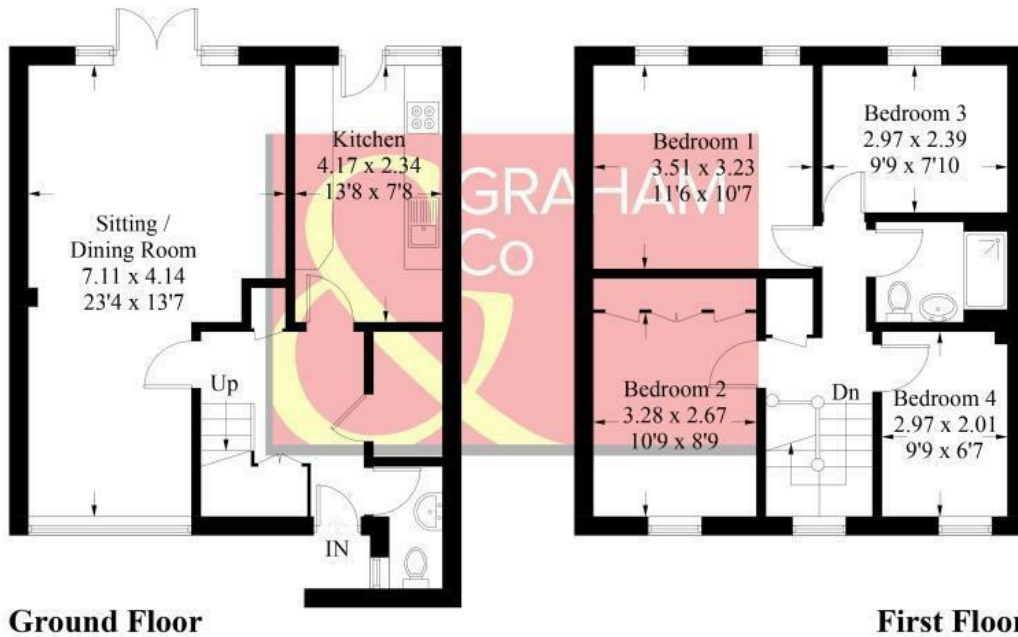
The property benefits from:

Entrance hall with numerous storage cupboards,
Downstairs cloakroom,
Fitted kitchen with cooker,
Living room with dining area,
Four bedrooms,
Shower room,
Enclosed rear garden.

Unfurnished.
Available immediately.

Anna Valley, Andover, SP11

Approximate Gross Internal Area = 96.4 sq m / 1038 sq ft



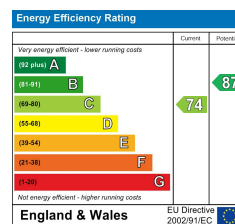
Ground Floor

First Floor

PRODUCED FOR GRAHAM AND CO

Whilst every attempt has been made to ensure the accuracy of the floorplan, measurements of doors, windows and rooms are approximate. These plans are for representation purposes only as defined by RICS Code of Measuring Practice and used as such by any prospective purchaser. © Emzo Marketing (ID524821)

DIRECTIONS



Tax Band: C



OPEN 7 DAYS

If you are considering selling your home please contact us today for your free no obligation valuation

01264 356500

IMPORTANT: we would like to inform prospective purchasers that these sales particulars have been prepared as a general guide only. A detailed survey has not been carried out, nor the services, appliances and fittings tested. Room sizes should not be relied upon for furnishing purposes and are approximate. If floor plans are included, they are for guidance only and illustration purposes only and may not be to scale. If there are any important matters likely to affect your decision to buy, please contact us before viewing the property.