



58 Montgomery Road, Enham Alamein, Andover, SP11 6HB  
Asking Price £665,000



## 58 Montgomery Road, Enham Alamein Andover, Asking Price £665,000

### PROPERTY DESCRIPTION BY Mr Nick King

Sold with no onward chain. Graham & Co are delighted to offer for sale, this substantial detached family home, with accommodation across three floors.

The accommodation comprises; entrance hall with cloakroom, living room, study and dining room/snug. There is a large open plan fitted kitchen/diner with breakfast area, with French doors to the rear garden and a separate utility room.

To the first floor there are five bedrooms, two with en-suite shower rooms and a family bathroom. The top floor has a spacious family room/tv room which could also be used as a sixth bedroom if required.

Outside a driveway leads to the double garage, with the rear garden comprising patio area leading to lawn.





#### Enham Chase Profile

The leafy village of Enham Alamein nestles with the rolling hills of Hampshire just under three miles north of historic Andover, now the principal town within the Test Valley Borough.

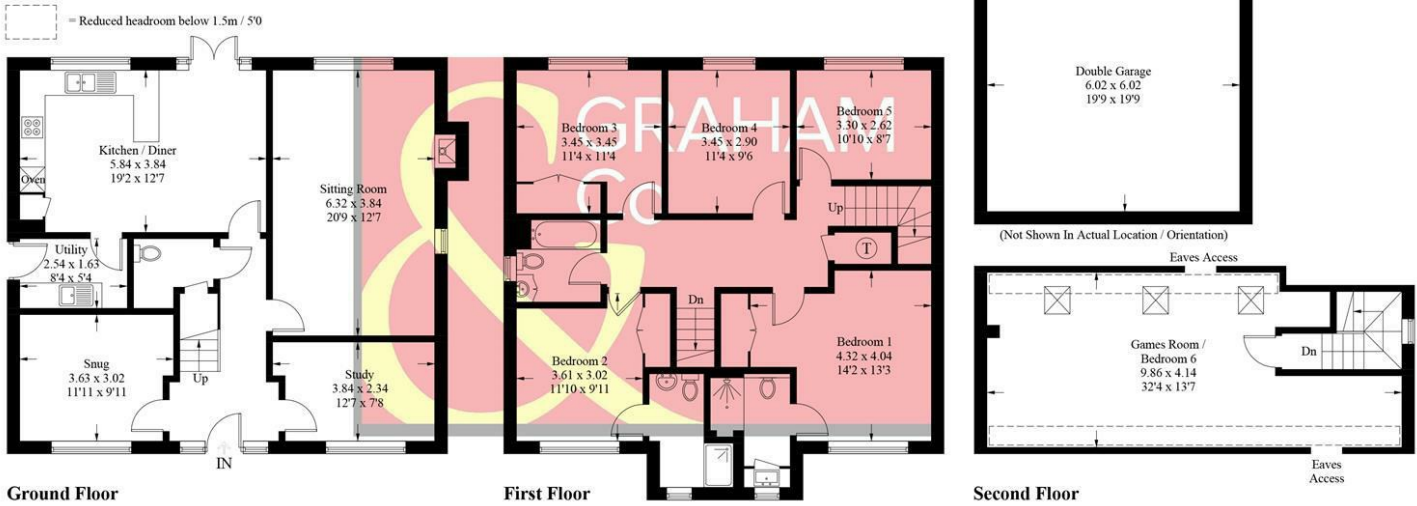
Given the name Alamein after World War II when the village of Enham received a substantial contribution from the grateful people of Egypt, the village church, St. George's is now internationally regarded as the memorial church for the battle of El-Alamein

Enham Chase was well designed with a high level of detail in not only the layout but attention to the materials used having taken inspiration from the traditional properties found within the county. Residents enjoy the mature trees and open green spaces that the development offers along with a footpath, which leads to the nearby Post Office and shop. There is a foot/cycle path which allows access for the village residents to the play area and neighbouring woodland.



# Montgomery Road, SP11

Approximate Gross Internal Area = 217.2 sq m / 2338 sq ft  
 Double Garage = 36.0 sq m / 387 sq ft  
 Total = 253.2 sq m / 2725 sq ft



**PRODUCED FOR GRAHAM AND CO**

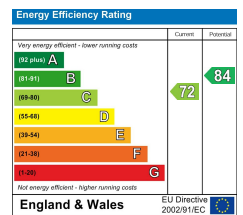
Whilst every attempt has been made to ensure the accuracy of the floorplan, measurements of doors, windows and rooms are approximate. These plans are for representation purposes only as defined by RICS Code of Measuring Practice and used as such by any prospective purchaser. © Emzo Marketing (ID889018)

## MORTGAGE ADVICE Across The Market Mortgages

An independent Mortgage brokerage offering expert advice from across the whole market. Whether you are a first-time buyer, home mover, remortgaging or buying a Buy-To-Let investment. Tristan can provide expert & reliable advice, in a clear jargon free language. Book a free consultation today.

E - [tristan@atmmortgages.com](mailto:tristan@atmmortgages.com) M - 07545320380

[www.atmmortgages.com](http://www.atmmortgages.com)



Tax Band: G



**OPEN 7 DAYS**

If you are considering selling your home please contact us today for your free no obligation valuation

**01264 356500**

IMPORTANT: we would like to inform prospective purchasers that these sales particulars have been prepared as a general guide only. A detailed survey has not been carried out, nor the services, appliances and fittings tested. Room sizes should not be relied upon for furnishing purposes and are approximate. If floor plans are included, they are for guidance only and illustration purposes only and may not be to scale. If there are any important matters likely to affect your decision to buy, please contact us before viewing the property.

