



2 Roving Close, Andover, SP11 6UL
£1,250 PCM

PROPERTY DESCRIPTION BY *Tanya Owens*

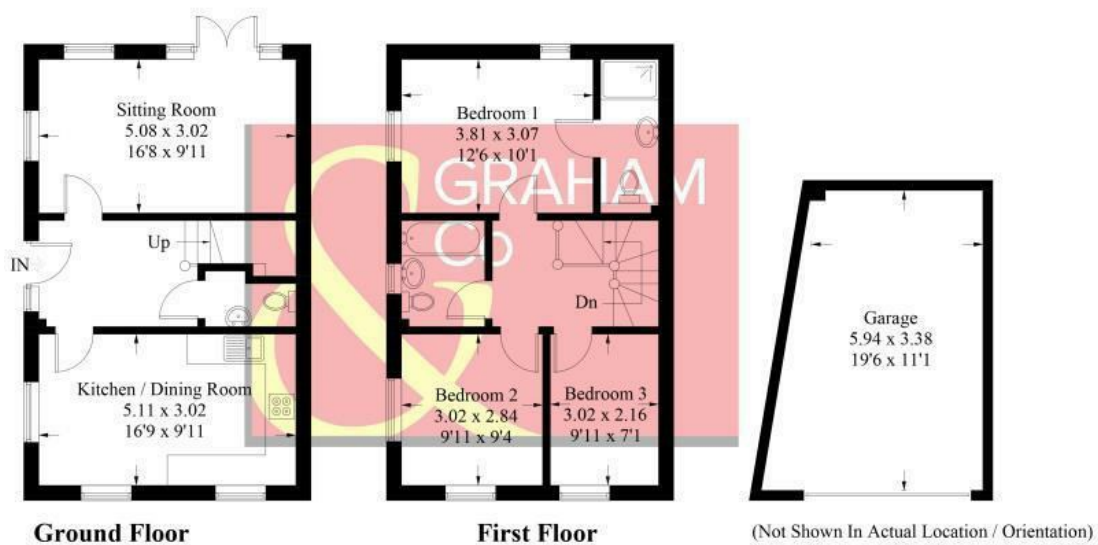
Graham & Co are delighted to offer this three bedroom family home which is situated on the popular Saxon Heights development.

Entrance hall,
Downstairs cloakroom,
Kitchen / diner,
Living room,
Master bedroom with en-suite shower room,
Two further bedrooms,
Family bathroom,
Rear garden,
Garage,
Parking.

Unfurnished,
Available end of April.

Roving Close, Andover, SP11

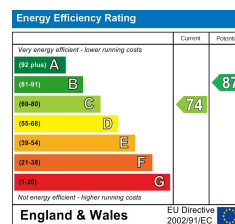
Approximate Gross Internal Area = 86.5 sq m / 931 sq ft
Garage = 23.2 sq m / 250 sq ft
Total = 109.7 sq m / 1181 sq ft



PRODUCED FOR GRAHAM AND CO

Whilst every attempt has been made to ensure the accuracy of the floorplan, measurements of doors, windows and rooms are approximate. These plans are for representation purposes only as defined by RICS Code of Measuring Practice and used as such by any prospective purchaser. © Enzo Marketing (ID429554)

DIRECTIONS



Tax Band: D



OPEN 7 DAYS

If you are considering selling your home please contact us today for your free no obligation valuation

01264 356500

IMPORTANT: we would like to inform prospective purchasers that these sales particulars have been prepared as a general guide only. A detailed survey has not been carried out, nor the services, appliances and fittings tested. Room sizes should not be relied upon for furnishing purposes and are approximate. If floor plans are included, they are for guidance only and illustration purposes only and may not be to scale. If there are any important matters likely to affect your decision to buy, please contact us before viewing the property.