



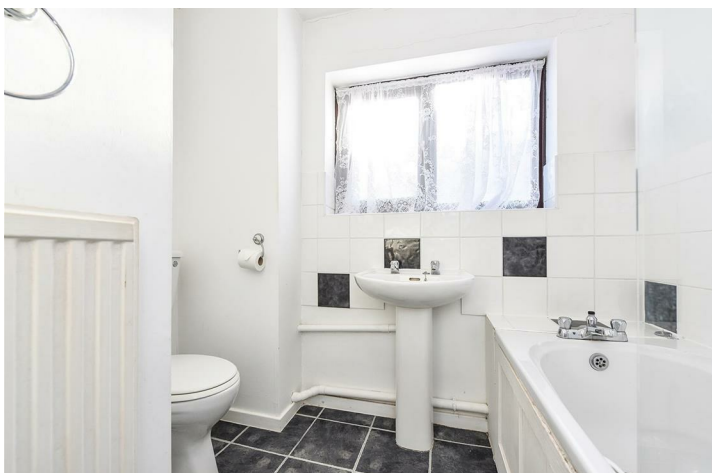
67 Watermills Close, Andover, SP10 2ND
Guide Price £225,000



67 Watermills Close, Andover, Guide Price £225,000

PROPERTY DESCRIPTION BY Mr Ross Beeden

A well presented two bedroom semi detached home situated in a desirable location just minutes from the town centre and sold with no onward chain. An ideal first purchase, the accommodation comprises of a lounge/diner, modern kitchen, bathroom, two double bedrooms, driveway parking for two cars and an enclosed rear garden.



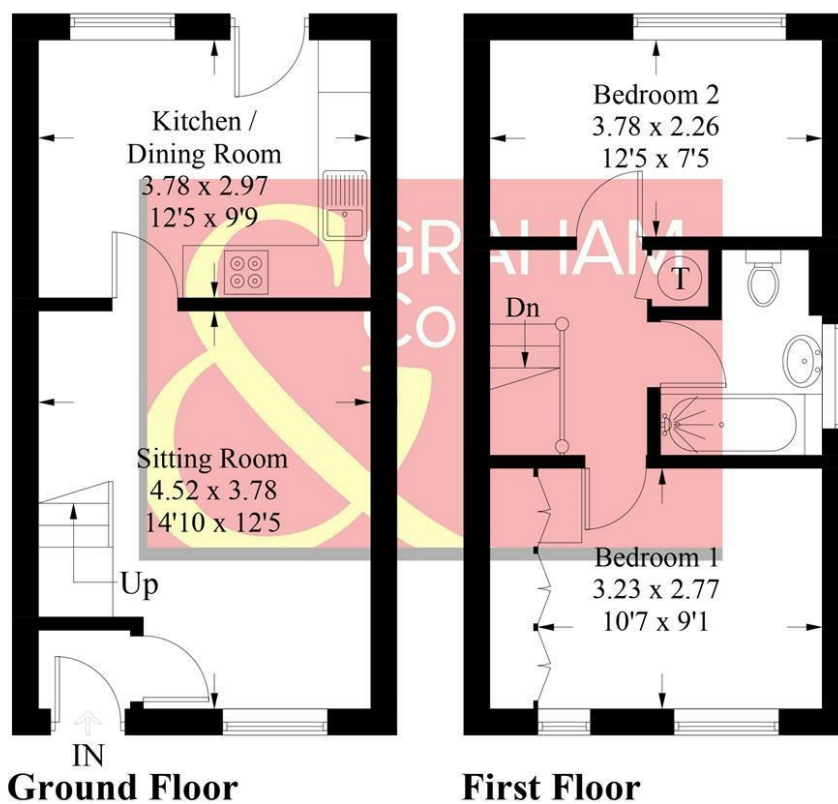


Andover offers a good range of shopping and recreational facilities including a theatre, cinema, new leisure centre, excellent selection of schools and a college for higher education. An abundance of open space and land with a selection of local nature reserve's all within walking distance of the town centre. The town itself boast a lovely "market town" feel and everything you may need is close at hand. The mainline train station offers a fast service to London Waterloo in just over an hour, and the A303 gives access to London via the M3 and the West Country.



Watermills Close, Andover, SP10

Approximate Gross Internal Area = 58.4 sq m / 629 sq ft

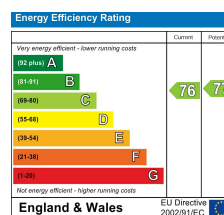


PRODUCED FOR GRAHAM AND CO

Whilst every attempt has been made to ensure the accuracy of the floorplan, measurements of doors, windows and rooms are approximate. These plans are for representation purposes only as defined by RICS Code of Measuring Practice and used as such by any prospective purchaser. © Emzo Marketing (ID 615615)

DIRECTIONS

From our office in London Street proceed to the roundabout and carry straight across into Winchester Road. Take the fourth turning on the right hand side into Wellesley Road. At the T-junction turn left into Barlows Lane and take the second turning on the right hand side into Watermills Close.



Tax Band: C



OPEN 7 DAYS

If you are considering selling your home please contact us today for your free no obligation valuation

01264 356500

IMPORTANT: we would like to inform prospective purchasers that these sales particulars have been prepared as a general guide only. A detailed survey has not been carried out, nor the services, appliances and fittings tested. Room sizes should not be relied upon for furnishing purposes and are approximate. If floor plans are included, they are for guidance only and illustration purposes only and may not be to scale. If there are any important matters likely to affect your decision to buy, please contact us before viewing the property.