



School Hill Cottages , Upton, Andover, SP11 0JJ
Asking Price £515,000



School Hill Cottages , Upton Andover, Asking Price £515,000

PROPERTY DESCRIPTION BY Mr Nick King

This delightful brick and flint cottage is situated in the glorious countryside of the North Wessex Downs AONB.

The property benefits from a recent double storey extension, with the accommodation now comprising of a kitchen/diner, living room with feature inglenook fireplace, three bedrooms and two bathrooms. Outside there is an excellent garden to the side of the property, a patio to the rear, double carport and driveway parking.





Upton profile

Upton is a quaint Hampshire hamlet situated in The North Wessex Downs Area of Outstanding Natural Beauty.

Conveniently located within easy reach Andover, Newbury and Hungeford, where you will find numerous amenities, including mainline train connectivity to London and the West.

Upton itself is a quiet and peaceful place, with stunning countryside on the doorstep. Numerous footpaths and bridleways provide an amazing network for walkers, runners, horse riders and cyclists alike.

The Crown Inn at Upton is a traditional cottage style pub and restaurant in the heart of Upton, serving clean rustic dishes which combine the classic French with modern rustic.


Excellent primary schooling is available in the surrounding villages along the valley, with a great choice of further educational establishments in and around the surrounding towns.

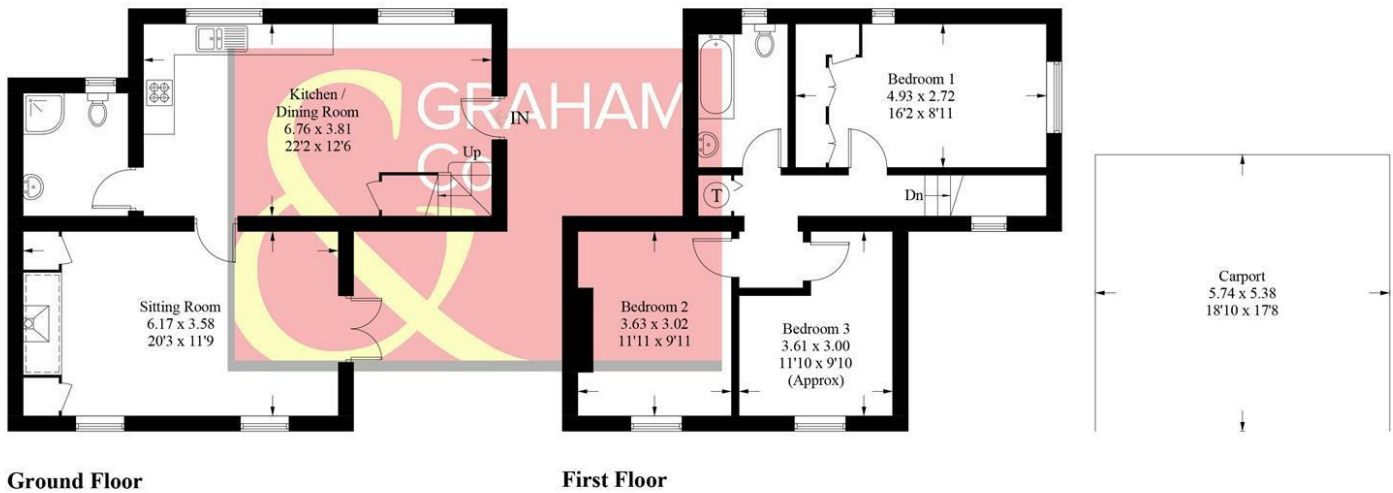


School Hill Cottages, Upton, SP11

Approximate Gross Internal Area = 104.2 sq m / 1122 sq ft



 = Reduced headroom below 1.5m / 5'0



Ground Floor

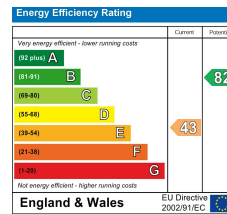
First Floor

PRODUCED FOR GRAHAM AND CO

Whilst every attempt has been made to ensure the accuracy of the floorplan, measurements of doors, windows and rooms are approximate. These plans are for representation purposes only as defined by RICS Code of Measuring Practice and used as such by any prospective purchaser. © Emzo Marketing (ID755747)

DIRECTIONS

Leave Andover on the A342 in a northerly direction towards Newbury. On reaching the centre of Hurstbourne Tarrant turn sharp left signposted Upton/Vernham Dean. Continue through Ibthorpe and once in the heart of the village take a left just before the Crown Inn. One School Hill Cottages is approximately 150 metres on your righthand side.



Tax Band: D



OPEN 7 DAYS

If you are considering selling your home please contact us today for your free no obligation valuation

01264 356500

IMPORTANT: we would like to inform prospective purchasers that these sales particulars have been prepared as a general guide only. A detailed survey has not been carried out, nor the services, appliances and fittings tested. Room sizes should not be relied upon for furnishing purposes and are approximate. If floor plans are included, they are for guidance only and illustration purposes only and may not be to scale. If there are any important matters likely to affect your decision to buy, please contact us before viewing the property.